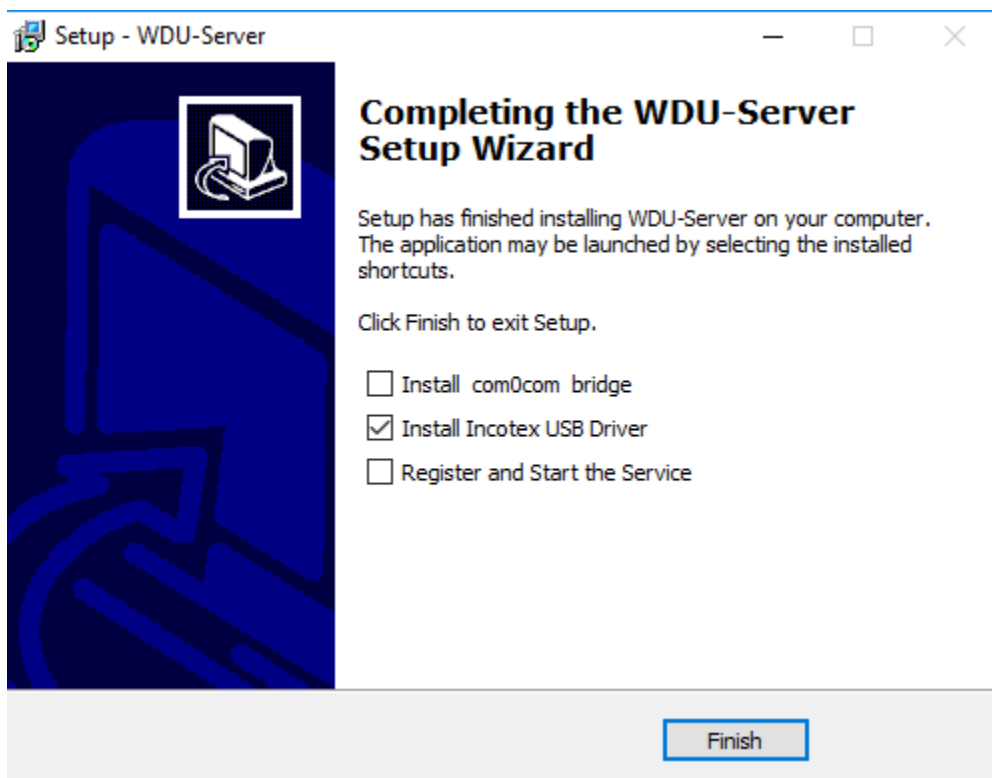


## MANUAL INSTALARE DRIVER / COM VIRTUAL INCOTEX SUCCES M7

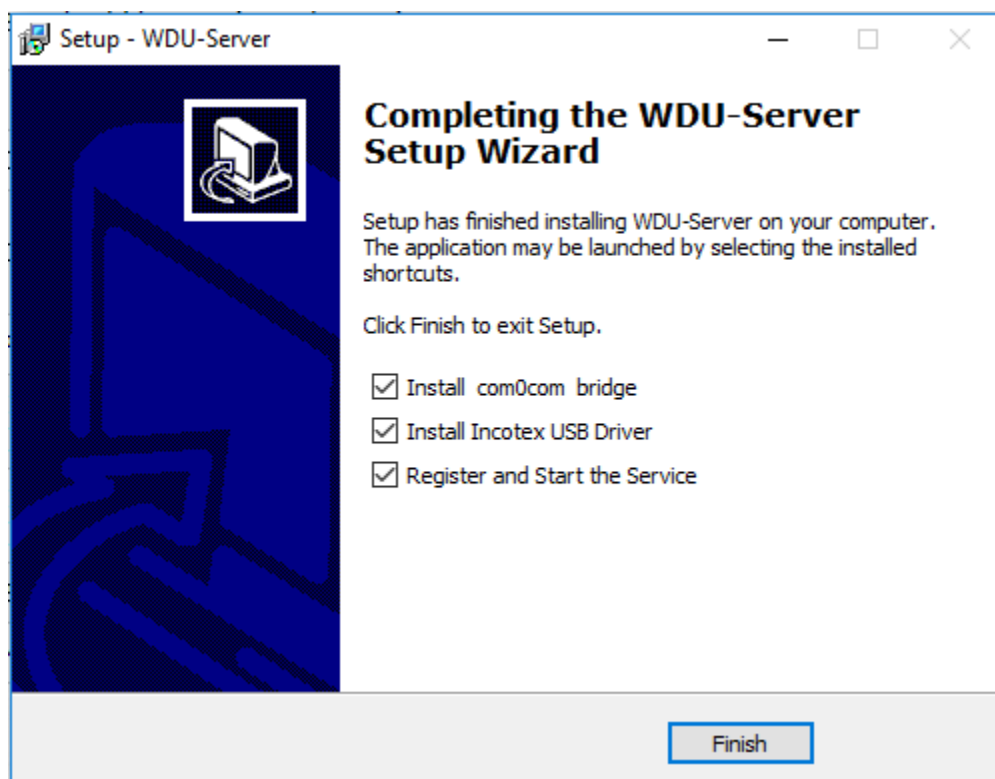
!!! Pentru **Fiscalizare / Programare baza de date (PLU)** se instaleaza doar "Incotex USB Driver" dupa cum urmeaza:

1. Rulati executabilul "WDU-Server-vserial-24" apasam "Next" / "Install" pana ajungem la urmatoarea pagina unde trebuie sa bifam "Install Incotex USB Driver" si debifam "Install com0com bridge" si "Register and Start the Service" apasam "Finish".

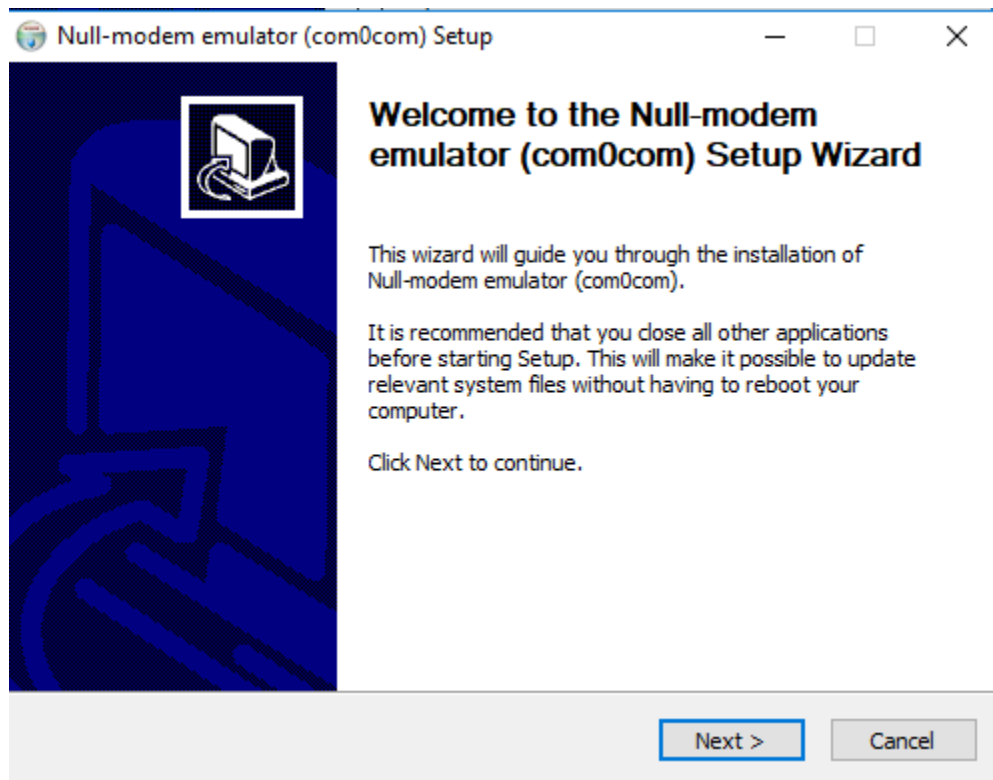


!!! Pentru utilizarea casei de marcat ca si **imprimanta fiscala (SUCCES DRV)** se instaleaza driverul dupa cum urmeaza:

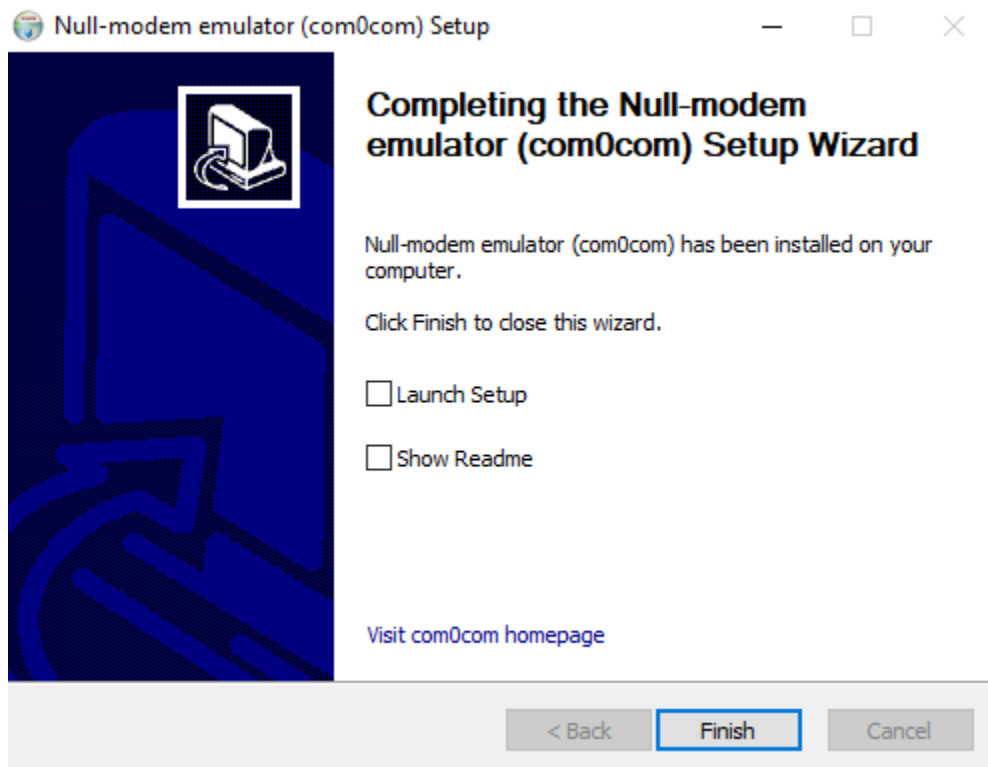
2. Rulati executabilul "*WDU-Server-vserial-24*" apasam "Next" / "Install" pana ajungem la urmatoarea pagina unde trebuie sa bifam "*Install Incotex USB Driver*" si apasam "Finish".



3. Se deschide urmatoarea fereastră

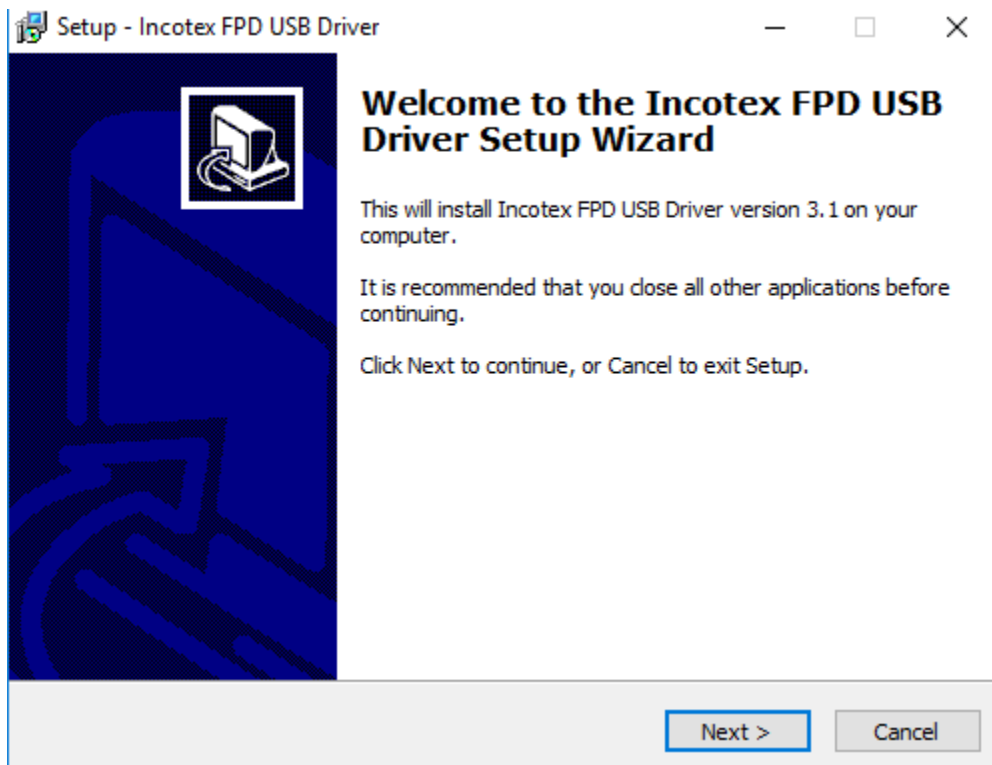


pentru a instala Eumulatorul pentru com-ul virtual si apasam "Next" / "I Agree" / "Next" / "Install" in timpul procesului de instalare o sa apara (dupa caz) anumite ferestre care o sa ceara permisiunea sa instalati com-ul virtual, apasati "Install" / "Next" pana apare fereastra urmatoare



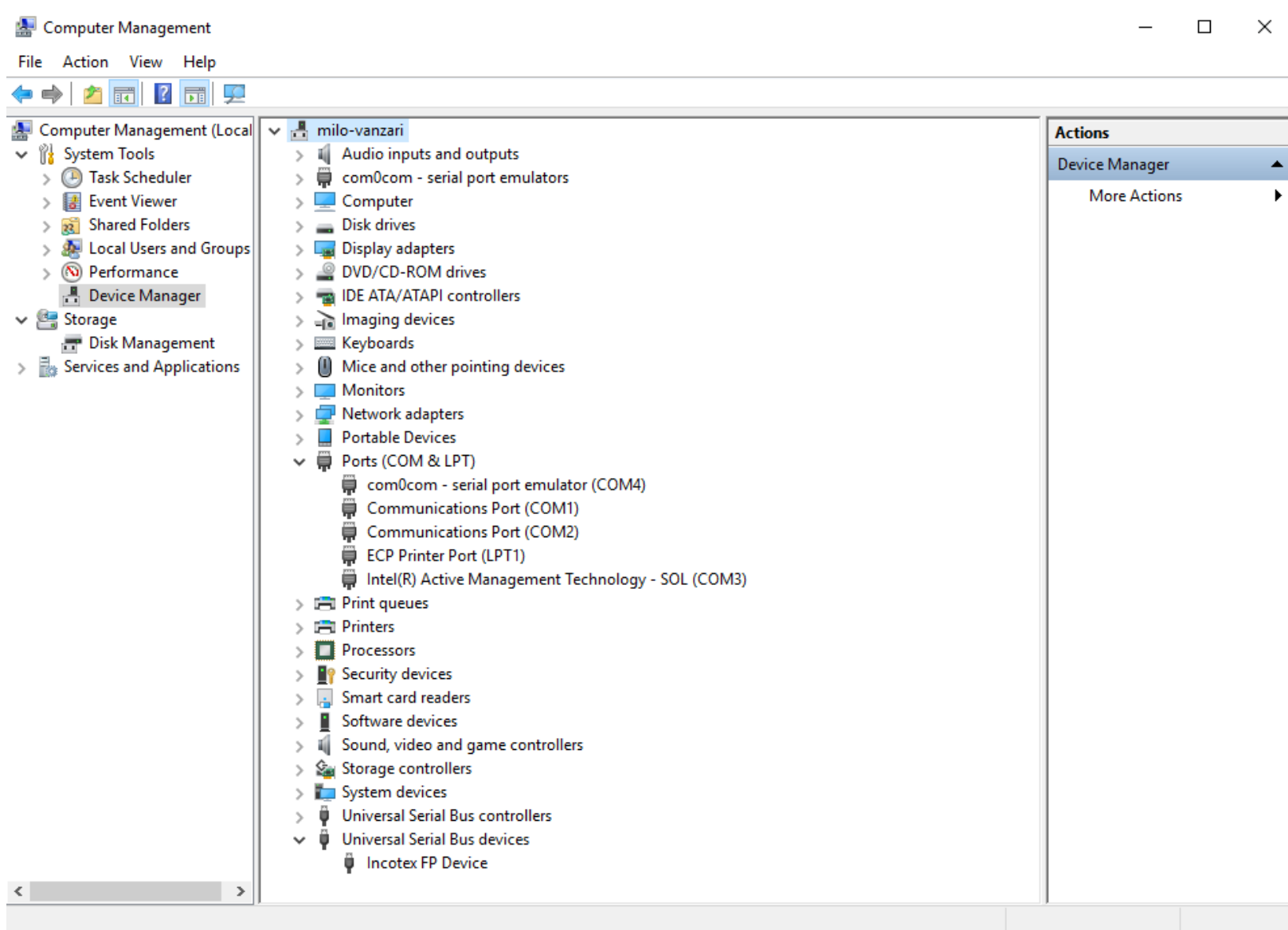
unde apasam "Finish"

4. Se deschide urmatoarea fereastrea



Apasam "Next" si asteptam ca instalarea sa se finalizeze.

5. In acest moment in Device Manager trebuie sa apara astfel:



- Ports (Com & LPT )
  - Com0com – serial port emulator (COMx)
- Universal Serial Bus devices
  - Incotex FP Device

Daca informatiile apar structurate astfel (ex. de mai sus), instalarea este finalizata cu success, in caz contrar dezinstalati din "Control panel" / "Programs and Features" - "*WDU server version 2.4*" si "*Null-modem emulator (com0com)*" in aceasta ordine, da-ti restart la calculator si reluati instalarea de la pasul "1".